

# MLS Area BA

# Residential Statistics



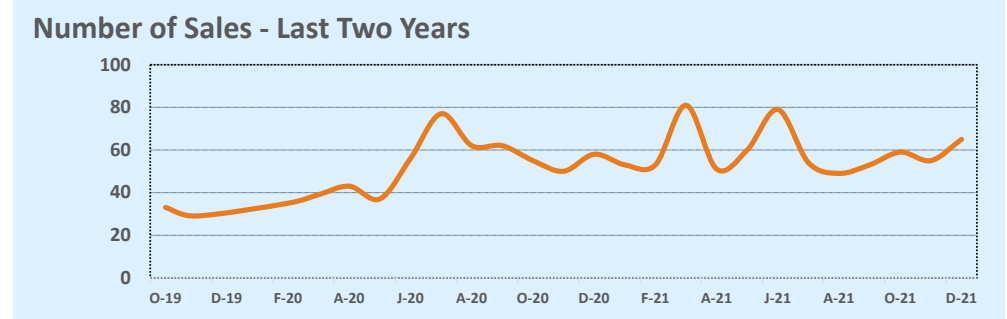
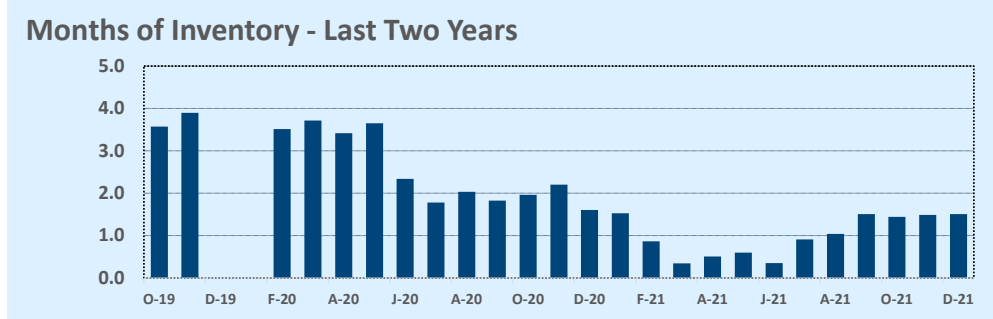
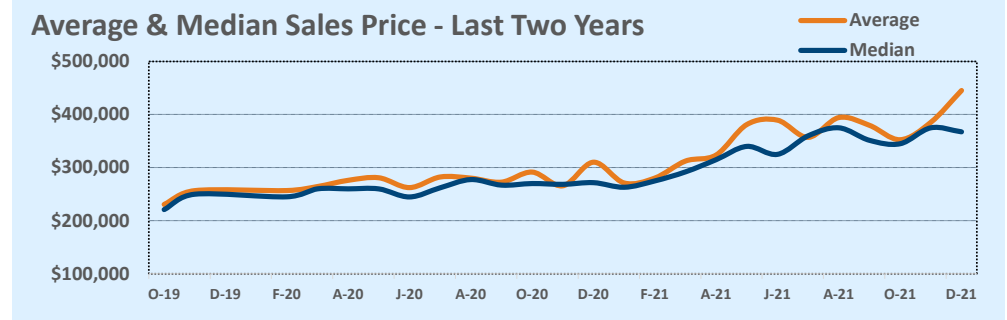
# November 2021

Listings	This Month			Year-to-Date		
	Nov 2021	Nov 2020	Change	2021	2020	Change
Single Family Sales	65	58	+12.1%	712	603	+18.1%
Condo/TH Sales	--	--	--	--	--	--
<b>Total Sales</b>	<b>65</b>	<b>58</b>	<b>+12.1%</b>	<b>712</b>	<b>603</b>	<b>+18.1%</b>
New Homes Only	25	14	+78.6%	135	154	-12.3%
Resale Only	40	44	-9.1%	577	449	+28.5%
Sales Volume	\$28,944,594	\$17,991,813	+60.9%	\$254,333,518	\$167,028,158	+52.3%
New Listings	45	48	-6.3%	817	782	+4.5%
Pending	58	9	+544.4%	132	569	-76.8%
Withdrawn	1	4	-75.0%	41	74	-44.6%
Expired	--	--	--	--	--	--
Months of Inventory	1.5	1.6	-6.0%	N/A	N/A	--

Price Range	This Month			Year-to-Date		
	New	Sales	DOM	New	Sales	DOM
\$149,999 or under	--	--	12	10	17	30
\$150,000- \$199,999	--	2	24	43	37	37
\$200,000- \$249,999	1	1	35	54	75	36
\$250,000- \$299,999	7	8	17	146	137	41
\$300,000- \$349,999	16	11	26	152	143	28
\$350,000- \$399,999	7	10	51	168	127	23
\$400,000- \$449,999	3	11	25	77	76	19
\$450,000- \$499,999	5	5	44	69	41	28
\$500,000- \$549,999	1	2	12	22	16	14
\$550,000- \$599,999	2	3	33	15	13	54
\$600,000- \$699,999	5	--	--	27	11	60
\$700,000- \$799,999	2	1	6	6	6	16
\$800,000- \$899,999	2	--	--	9	2	90
\$900,000- \$999,999	--	--	--	3	4	11
\$1M - \$1.99M	--	--	--	7	4	57
\$2M - \$2.99M	--	2	12	4	2	12
\$3M+	--	--	--	5	1	18
<b>Totals</b>	<b>45</b>	<b>65</b>	<b>30</b>	<b>817</b>	<b>712</b>	<b>31</b>

Average	This Month			Year-to-Date		
	Nov 2021	Nov 2020	Change	2021	2020	Change
List Price	\$456,309	\$315,082	+44.8%	\$354,171	\$281,036	+26.0%
List Price/SqFt	\$242	\$154	+57.2%	\$188	\$152	+24.4%
Sold Price	\$445,301	\$310,204	+43.6%	\$357,210	\$276,995	+29.0%
Sold Price/SqFt	\$238	\$153	+55.9%	\$191	\$149	+27.8%
Sold Price / Orig LP	97.8%	98.6%	-0.8%	101.4%	97.2%	+4.3%
Days on Market	30	57	-46.8%	31	51	-40.1%

Median	This Month			Year-to-Date		
	Nov 2021	Nov 2020	Change	2021	2020	Change
List Price	\$379,900	\$271,665	+39.8%	\$320,000	\$264,990	+20.8%
List Price/SqFt	\$223	\$152	+46.9%	\$178	\$148	+20.4%
Sold Price	\$367,424	\$271,665	+35.2%	\$333,000	\$262,000	+27.1%
Sold Price/SqFt	\$219	\$152	+44.0%	\$183	\$146	+25.0%
Sold Price / Orig LP	100.0%	100.0%	+0.0%	100.0%	98.0%	+2.0%
Days on Market	17	32	-46.9%	9	28	-67.9%



Based on information from the Austin Board of REALTORS® (alternatively, from ACTRIS). Neither the Board nor ACTRIS guarantees or is in any way responsible for its accuracy. The Austin Board of REALTORS®, ACTRIS and their affiliates provide the MLS and all content therein "AS IS" and without any warranty, express or implied. Data maintained by the Board or ACTRIS may not reflect all real estate activity in the market.